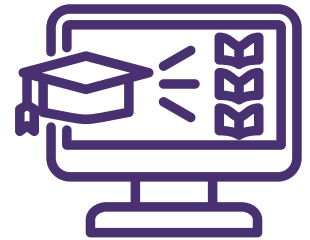


# BEST PRACTICE SPOTLIGHT ORGANIZATIONS

## What is a BPSO?

The Registered Nurses' Association of Ontario (RNAO) enters into three-year partnerships with healthcare organizations committed to implementing its internationally-recognized Nursing Best Practice Guidelines (BPGs).

Ontario Health Teams (OHTs) collaborate to implement four RNAO BPGs over a four-year period to achieve BPSO designation. Modules on the selected guidelines chosen by the Sarnia-Lambton OHT BPSO Steering Committee can be found on the next page.



## What is a BPSO Champion?



A network made up of thousands of nurses and interdisciplinary health-care providers that help raise awareness and motivate others to facilitate change.



Health-care workers who are passionate about evidence-based practice and improving care in their organization.

## Interested in Becoming a BPSO Champion?

### Benefits

- Access to the RNAO champions facilitators
- A one-day education (orientation) workshop
- Access to a support network for ongoing consultation and resources through web-services, and regular meetings
- The opportunity to take part in half-day Booster Sessions.

Scan for upcoming training opportunities



# Advance Your Skills: Complete the BPSO OHT Modules and Make a Difference!

Created by the S-L OHT BPSO Steering Committee, these modules are designed to educate and support BPSO Champions in implementing Best Practice Guidelines and driving positive change in your organization.



## Sarnia-Lambton OHT BPSO Orientation Module

This module explains the Sarnia-Lambton OHT's partnership with RNAO to implement Best Practice Guidelines (BPGs), the role of BPSO organizations, and how Best Practice Champions lead BPG adoption to improve care.



## Person and Family-Centred Care Module

This module emphasizes involving patients and families as active partners in care, focusing on building trust, respecting preferences, and promoting communication to ensure care aligns with individual values.



## Care Transitions Module

This module covers best practices for safe, seamless transitions between care settings, emphasizing clear communication, patient education, and discharge planning to reduce readmissions and improve outcomes.



## A Palliative Approach to Care in the Last 12 Months of Life

This module covers best practices for palliative care in the last 12 months of life, focusing on symptom management, emotional support, and end-of-life planning to enhance quality of life for patients and families.



## Crisis Intervention for Adults Using a Trauma-Informed Approach

This module highlights trauma-informed crisis intervention that promotes safety, trust, and healing. Key practices like brief interventions and peer support help reduce distress and support recovery.

## Why Complete These Modules?



These modules will equip you with the knowledge and tools to effectively implement Best Practice Guidelines within your organization.



By completing the modules, you'll become a more effective leader in improving patient care and fostering evidence-based practice.