



2024-25 ANNUAL REPORT

INNOVATING TOGETHER FOR BETTER HEALTH



info@sarnialambtonoht.ca



www.sarnialambtonoht.ca



[@SarniaLambtonOHT](https://www.facebook.com/SarniaLambtonOHT)



Sarnia-Lambton Ontario Health Team



LAND ACKNOWLEDGEMENT

Sarnia-Lambton OHT partners, collectively, acknowledge our obligation to truth and reconciliation and acknowledge that this land on which we are gathered today is part of the ancestral land of the Chippewa, Odawa, and Potawatomi peoples, referred to collectively as the Anishinaabeg. It is through the connection of the Anishinaabeg with the spirit of the land, water and air that we recognize their unique cultures, traditions, and values. Together as treaty people, we have a shared responsibility to act with respect for the environment that sustains all life, protecting the future for those generations to come. Please take a moment to reflect on your own commitment to demonstrate change through your words and actions that honour the Calls to Action.

A MESSAGE FROM OUR LEADERSHIP TEAM

INNOVATING TOGETHER FOR BETTER HEALTH



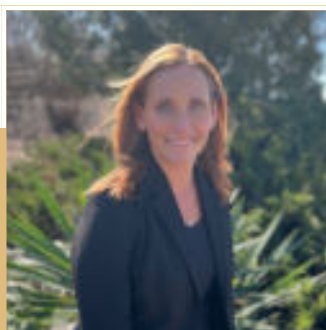
Welcome to the 2024–25 Sarnia-Lambton Ontario Health Team Annual Report.

Over the past year, the Sarnia-Lambton OHT has taken bold steps forward - deepening partnerships, expanding access to care, and championing collaborative, person-centred approaches across our community. As our work matures, we continue to move beyond foundational planning and into full implementation, with a growing network of partners leading and co-designing transformative initiatives.

This year's report showcases the impact of our collective efforts: from the development of a Primary Care Network and the expansion of Inter-professional care teams and access to care centres, to stronger digital health tools and a deepened commitment to equity, inclusion, and culturally safe care. We have strengthened our support for Indigenous communities, advanced integrated chronic disease care, and introduced new ways to connect people to the services they need—when and where they need them.

These achievements are only possible because of the incredible dedication of our advisory councils, working groups, healthcare providers, patients, families, and care partners. Together, we are shaping a more responsive, seamless health system - one that puts people first.

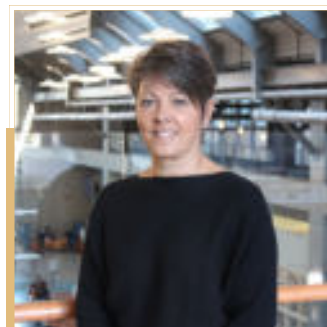
As we look ahead, we remain focused on building healthier communities by advancing health equity, improving access to care across Lambton County and working alongside our partners to support Ontario's Primary Care Action Plan. We are grateful to our partners for their commitment and collaboration and look forward to the road ahead.



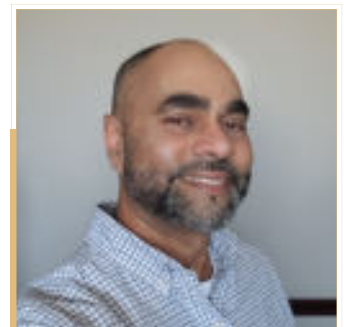
Nadine Neve
Executive Lead



Kathy Bresett
Collaboration Council Chair



Paula Reaume-Zimmer
Collaboration Council Vice Chair



Dr. V. Singh
Interim Co-Design Lead

Our Partners



Alzheimer Society
SARNIA · LAMBTON

Bayshore®
HealthCare

Bear Creek Terrace
Omni
Quality Living



Bluewater Healthcare
Network FHO



Central Lambton
Family Health Team



COMMUNITY LIVING
Sarnia-Lambton
Inspiring Possibilities



Entité
ÉRIÉ ST. CLAIR/SUD-OUEST

Family Counselling Centre
Sarnia-Lambton

home
instead.

Lake Huron Docs FHO



Midwifery Services
of Lambton Kent

lcads
One person at a time.

North Lambton
Community Health Centre

Ontario
Health atHome



NEW
BEGINNINGS
AIDS & STROKE RECOVERY ASSOCIATION

Rapids
Family Health Team



St. Clair
Child & Youth Services
Empowering Mental Wellness

Petrolia Medical
Associates (FHN)

S&R Nursing
Homes Ltd.
Part of the S&R Group of Companies
"Where Friendships Flourish And Life is Enriched"

Sarnia-Lambton
REBOUND

Sarnia Physicians
Organization FHO

St. Joseph's
Hospice
Sarnia-Lambton

Twin Bridges
Nurse Practitioner-Led Clinic

Transform
SHARED SERVICE ORGANIZATION

THE
Centre
Building a Community Free from Sexual Harm and Gender-Based Violence



VISION
Nursing & Rest Home

westover
TREATMENT CENTRE



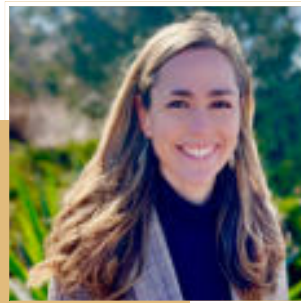
watford
QUALITY CARE CENTRE

Women's Interval Home
of Sarnia-Lambton

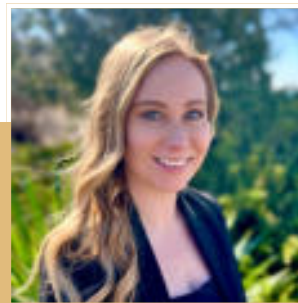
OUR TEAM



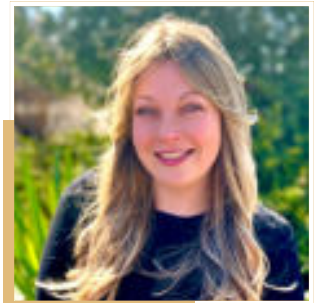
Nadine Neve
Executive Lead



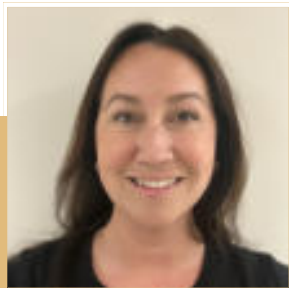
Julie Harries
Health Systems Integration
Lead



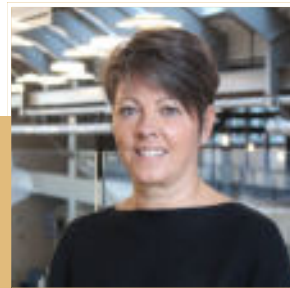
Jasmyne Schauteet
Executive Administrative
Assistant



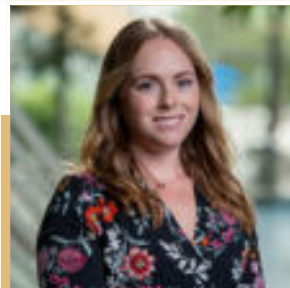
Amy Weiler
Engagement and
Partnerships Lead



Paige Boris
Collaboration Council Chair



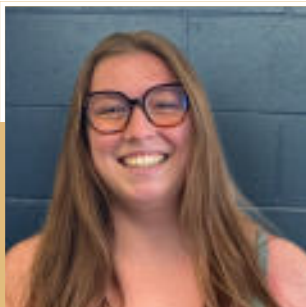
Paula Reaume-Zimmer
Collaboration Council Co-Chair



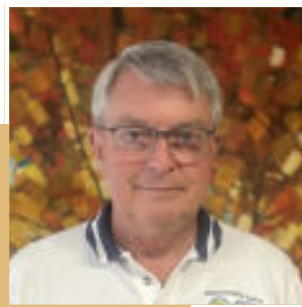
Melissa Hill
Integrated Communications
Advisor



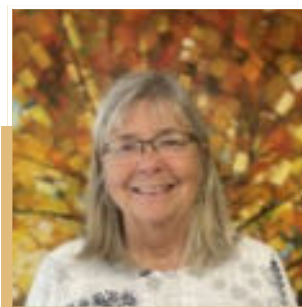
Sameh Hashem
Population Health & Quality
Improvement Specialist
(Shared role CKOHT)



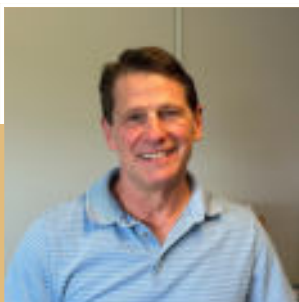
Olivia Freer
Engagement Project Assistant



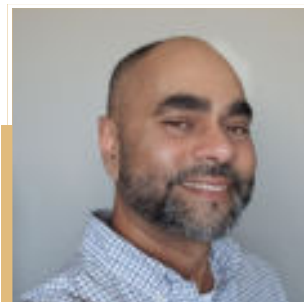
Greg Robbins
Patient, Family, Care Partner
Co-Design Lead



Chris West
Patient, Family, Care Partner
Co-Design Lead



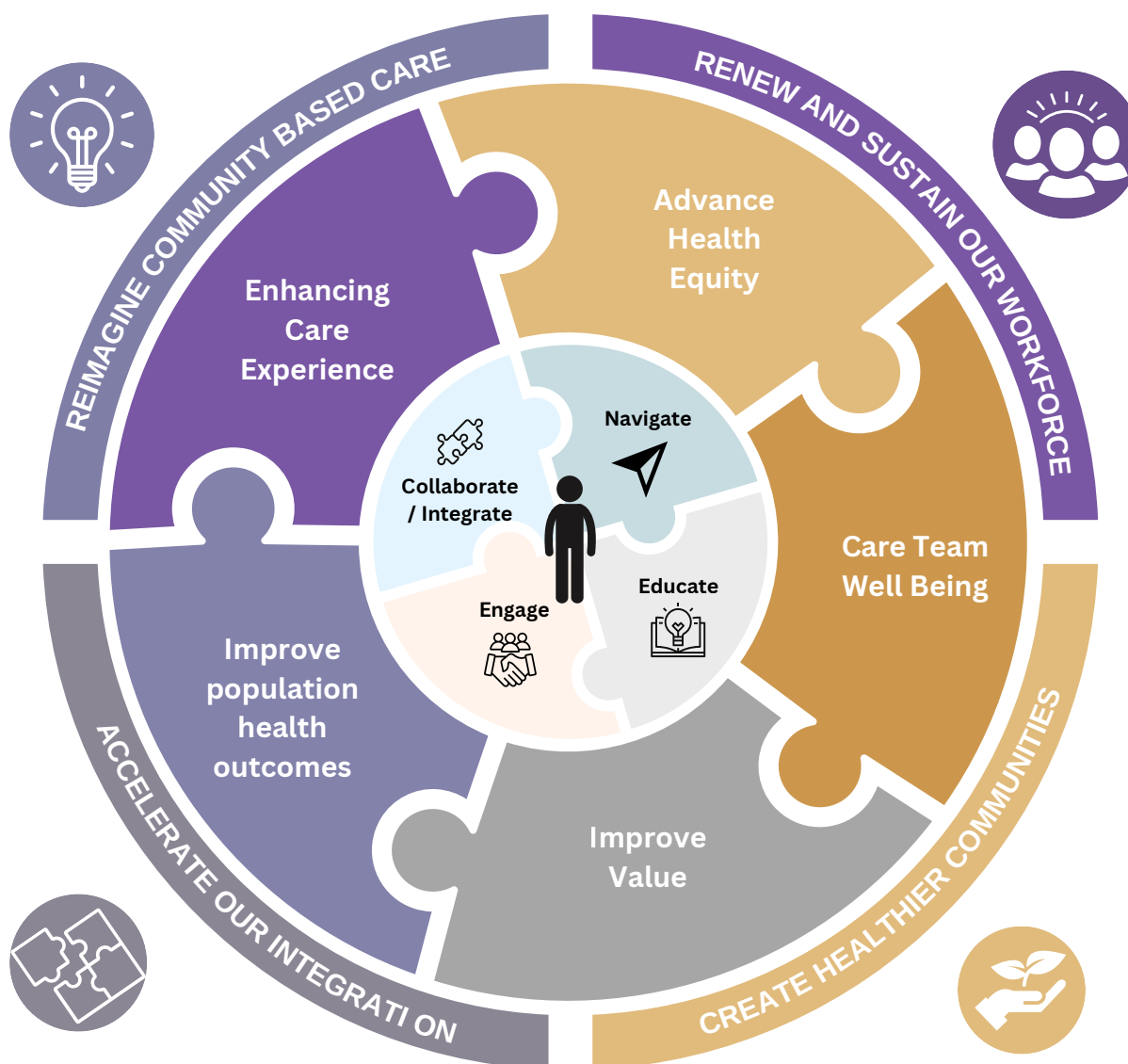
Dr. R. Hislop
Clinical Transformation Lead



Dr. V. Singh
Clinical Co-design Lead
(Primary Care)

STRATEGY FRAMEWORK

This year, the Sarnia-Lambton OHT team came together to develop a new strategic framework that aligns initiatives with our strategic priorities. This framework ensures that all efforts contribute to enhancing care, advancing health equity, improving outcomes, and supporting our healthcare workforce. It also outlines the key activities the team employs to achieve these outcomes, providing a clear path from strategy to action.



SYSTEM NAVIGATION

SOCIAL PRESCRIBING

COLLABORATIVE RESEARCH PROJECT

Lambton College, Chatham-Kent OHT, and Sarnia-Lambton OHT have received Community College and Social Innovation Fund (CCSIF) approval for a three-year project to:

- Develop tools for evaluating social prescribing.
- Identify opportunities for inclusive and equitable access.

43 ATTENDEES AT THE SOCIAL PRESCRIBING 101 WEBINAR



272 TOTAL CONTACTS
APRIL 1, 2024 - MARCH 31, 2025

Community Connection helps people find and access community & social services in their community. They support multiple Family Health Teams, Community Health Centres, and Paramedic Services across the province, connecting individuals impacted by social determinants of health by accepting eReferrals or calls and texts to their 24/7 helpline, 2-1-1.



AGE-FRIENDLY SARNIA-LAMBTON

WEBSITE

The [Age-Friendly Sarnia-Lambton website](#) features over 600 service listings for all ages and stages.

3,500

**AVERAGE SITE VISITS
PER MONTH**



AGE FRIENDLY EXPO

The Age Friendly Expo is an annual event that began in 2019, dedicated to promoting physical, mental, and social well-being for people of all ages. In 2024, the event had 2000 guests explore a wide range of local services and community organizations in an engaging, inclusive environment designed to support healthy, connected living.



SYSTEM NAVIGATION

COMMUNITY OF PRACTICE NAVIGATION PORTAL (HEALTHCHAT.CA)



124%

INCREASE IN MEMBERSHIP
SINCE APRIL 2024

Launched in January 2024, the Navigation portal now has over 120 users. It helps service providers connect, share resources, and collaborate to support clients. Features include educational materials, networking, secure messaging, and links to provincial resources.

"I really enjoy having the resources on hand when needed. Even if I don't go in weekly, I do read the updates to know what I can access when I need it. Also a great place to ask a question that many could help with."



NAVIGATION WEBINARS

11

WEBINARS HELD

519

ATTENDEES

The Sarnia-Lambton OHT has hosted multiple webinars to highlight local resources for complex topics like transportation, housing, legal supports, Indigenous supports, and mental health services.



CONNECTION CUBE

The first Connection Cube was launched in July 2023, at the Sarnia Library in partnership with the County of Lambton to enhance access to navigation resources for community members. It offers a soundproof space with a phone, internet access, and a device for virtual connections.



Sarnia-Lambton's newest connection cube is now installed and ready for use at the Centre Communautaire Francophone's Accès Sante Franco Hub.

DIGITAL HEALTH

PATIENTS BEFORE PAPERWORK

As Patients before Paperwork is one of the top priorities for the province, we are working closely with our delivery partners, including Ontario Health, Transform Shared Service Organization, Amplify (formerly eHealth Centre of Excellence) and Ontario MD to better coordinate adoption of solutions, inform future planning, and reduce administrative burden in primary care.

ARTIFICIAL INTELLIGENCE AND AI SCRIBE TOOLS

The Sarnia-Lambton OHT is working alongside primary care providers and ambient Artificial Intelligence (AI) scribe organizations to trial tools to implement AI practices, decreasing administrative burden in Primary Care offices. This work will continue into 2025/26 fiscal year.



REGIONAL DIGITAL HEALTH PLANNING

The Sarnia-Lambton OHT, in collaboration with Transform Shared Service Organization and neighboring OHTs (Chatham-Kent and Windsor-Essex), is exploring a regional approach to Digital Health advisory functions. A focus group and survey have been completed, and further efforts toward regional collaboration are ongoing.

HEALTH 811



The Sarnia-Lambton OHT is working to integrate third-party apps for health records, appointment check-ins, virtual care, and appointment booking.

DIGITAL HEALTH ENABLERS

The Sarnia-Lambton OHT received additional funds in 2024/25 to support additional digital enablers including:

- Online appointment booking
- Hypercare secure messaging for Community Health Integrated Care and MobileCare teams
- Integrated Decision Support tool at North Lambton CHC
- Sarnia-Lambton OHT Website Renewal



DIGITAL HEALTH



Virtual Urgent Care
is here for you and your family

- ✓ Paediatric and adult appointments available
- ✓ Book a same or next day appointment at **UrgentCareOntario.ca** or by calling **1-844-227-3844**

Services provided across Ontario by:

Children's Hospital
London Health Sciences Center

St. Joseph's
Healthcare Hamilton

ENHANCING PATIENT ACCESS THROUGH PROVINCIAL DIGITAL HEALTH TOOLS

The Sarnia-Lambton OHT, in collaboration with its partners, is actively promoting the use of provincially funded digital health tools and programs. These initiatives are designed to modernize healthcare delivery, improve system connectivity, and empower patients across the province. By raising awareness and encouraging adoption, the team aims to ensure that individuals have timely access to care, are better informed about their health, and can engage more effectively in their healthcare journey.

Empower your health journey with ConnectMyHealth

ConnectMyHealth is a digital health tool that provides you with an online, single access channel to view your health records from participating hospitals in southwestern Ontario.

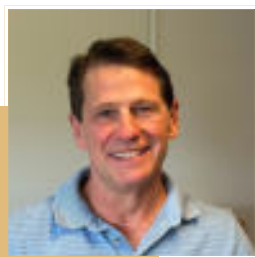
ConnectMyHealth can be used on desktop and mobile devices – and it's free to use!

For more information, ask your healthcare provider, visit info.ConnectMyHealth.ca, or scan



PRIMARY CARE ENGAGEMENT & LEADERSHIP

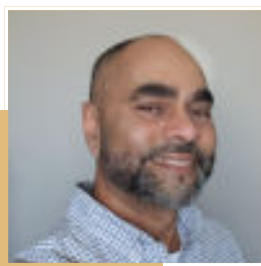
PRIMARY CARE ENGAGEMENT



Dr. R. Hislop

Clinical Transformation Lead

Dr. Rob Hislop has joined the Sarnia-Lambton OHT as the Clinical Transformation Lead, focusing on primary care engagement. He will help form the Primary Care Network and provide clinical expertise for initiatives such as Integrated Clinical Pathways and System Navigation.



Dr. V. Singh

Clinical Co-design Lead (Primary Care)

Dr. Vid Singh has joined the Sarnia-Lambton OHT as the Clinical Co-design Lead (Primary Care), overseeing the formation of the Primary Care Network and supporting Digital Health maturity. He is also the Regional Primary Care Lead for Ontario Health, bringing extensive expertise in system-level planning.

PRIMARY CARE NETWORK (PCN) DEVELOPMENT

The Sarnia-Lambton OHT is moving forward with the development of a Primary Care Network (PCN) to improve access to coordinated, comprehensive care across the region. The Primary Care Network will support the planning and implementation of initiatives to support the Ontario Primary Care Action Plan (<https://www.ontario.ca/page/ontarios-primary-care-action-plan-january-2025>) along with key initiatives aimed to support clinicians and provide Primary Care a voice in decision making.

THE VALUE OF PRIMARY CARE NETWORKS



IMPROVED PATIENT EXPERIENCE

Engage patients in planning and communication within their communities.



BETTER OUTCOMES

Facilitate initiatives addressing health issues through local primary care provider collaboration.



LOWER COSTS

Optimize resource utilization, ensuring equitable access across practices.



CLINICIAN WELL-BEING

Create networks for knowledge sharing, leadership development, and professional growth.



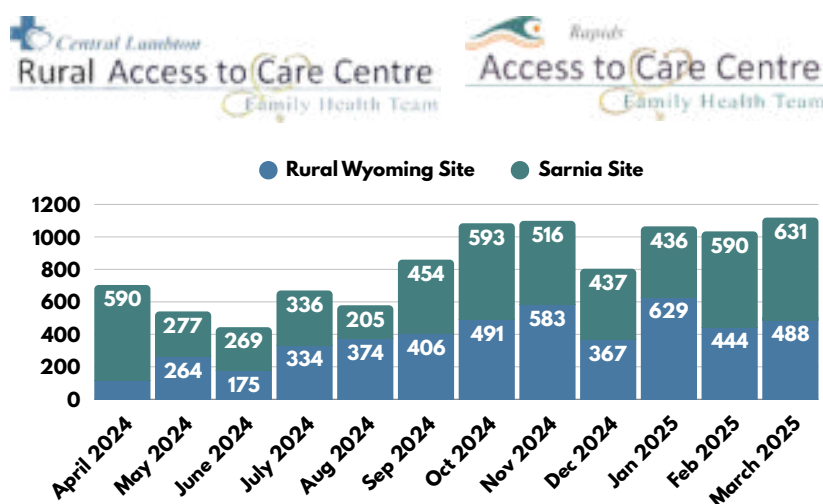
HEALTH EQUITY

Identify local challenges and foster actions to deliver equitable, patient-centered care.

PRIMARY CARE ENGAGEMENT & LEADERSHIP

URBAN AND RURAL ACCESS TO CARE CENTRES

On January 28, 2025, MPP Bob Bailey shared that the Ministry of Health is allocating \$910,000 per year over the next two years for Rapids Family Health Team, Central Lambton Family Health Team and North Lambton Community Health Centre to continue operations of urban and rural access to care centres in Sarnia-Lambton. The Centres continue to assist in providing episodic care, reducing emergency department visits.



Both rural and Rapids Access to Care have seen a total of 10,003 visits over the past fiscal year.

PREVENTIVE CARE PROGRAM EXPANSION

- ✓ Expansion to Diabetes and Pre-Diabetes in Primary Care
- ✓ Focused on outreach to rural communities and target regions with high prevalence of diabetes
- ✓ Strong collaboration across multiple Sarnia-Lambton OHT partner organizations
- ✓ Focused on centralized approach

LONG TERM CARE & PALLIATIVE CARE



NURSE LED OUTREACH TEAM

Over the course of 2024/25, the Nurse Led Outreach Team (NLOT), was re-established through a partnership between Bluewater Health, the Sarnia-Lambton OHT and Twin Bridges Nurse Practitioner clinic to support long-term care homes and their residents, thus reducing emergency department visits for medical needs that can be provided on site in long-term care homes.



PALLIATIVE CARE

LEAP CORE TRAINING

We were proud to partner with Ontario Health West Palliative Team and Pallium to offer the LEAP Core Course - an interactive, two-day palliative care training held in January 2025 for physicians, nurses, pharmacists, and social workers, led by local experts.



LEAP
CORE

27 INDIVIDUALS
TRAINED

A PALLIATIVE APPROACH TO CARE IN THE LAST 12 MONTHS OF LIFE BEST PRACTICE GUIDELINE LEARNING MODULE

WHAT IS A PALLIATIVE APPROACH TO CARE?

A palliative approach provides holistic care to individuals with life-limiting illness, focusing on symptom management, emotional support, and effective communication. It tailors care to the person's needs, preferences, and goals, offering support across all settings.



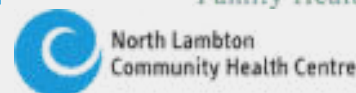
This module created by the Sarnia-Lambton OHT Best Practice Spotlight organization (BPSO) steering committee covers best practices for palliative care in the last 12 months of life, focusing on symptom management, emotional support, and end-of-life planning to enhance quality of life for patients and families.

Scan here to access
the module!

COMMUNITY SUPPORTS



CONGESTIVE HEART FAILURE PROGRAM



**CLIENTS ENROLLED IN CHF CLINIC
(APRIL 2024 - MARCH 2025)**

1136

**# OF UNIQUE INDIVIDUALS SERVED
(APRIL 2024 - MARCH 2025)**

199

TRANSITIONAL CARE BEDS

The transitional care beds program, led by Bluewater Health, is creating additional capacity in hospital by transitioning patients who no longer require hospital level of care (Alternate Level of Care) to beds at Vision Rest Home. The partnership between Bluewater Health and Vision Rest Home aims to increase capacity and reduce wait times from hospital to other destinations, such as long-term care or assisted living.



TRANSITIONS IN CARE & SERVICES BEST PRACTICE GUIDELINE LEARNING MODULE

This learning module, developed by the Sarnia-Lambton OHT BPSO Steering Committee, outlines best practices for ensuring safe and seamless transitions between care settings. It emphasizes the importance of clear communication, patient education, and effective discharge planning to reduce readmissions and improve health outcomes.



**Scan here to access
the module!**



PATIENT, FAMILY, CARE PARTNER (PFCP) ENGAGEMENT

PURPOSE AND GOALS

-  Co-design programs and services to improve patient experiences
-  Share lived experiences to inform health system decisions
-  Build skills through learning and collaboration
-  Join working groups to ensure patient-centered care

ABOUT THE COUNCIL

10

PFCP
MEMBERS

3

NEW
MEMBERS

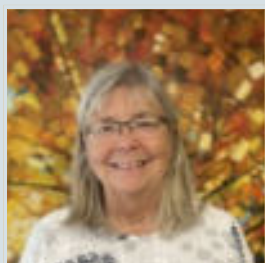
2

MENTORSHIP
MATCHES

90%

OF MEMBERS
ACTIVELY
CONTRIBUTE
TO OTHER
COUNCILS AND
WORKING
GROUPS

REFLECTIONS FROM CO-LEADS

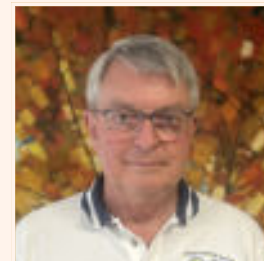


“ This was my first year serving as Co-Lead of the S-L OHT as a Patient Family representative. It’s been an incredibly informative experience, helping me better understand the mandate of the S-L OHT and the challenges it faces. I’ve thoroughly enjoyed the opportunity and have been proud to contribute and share the Patient, Family & Caregiver perspective. ”

Chris West Patient Family Care Partner
Co-Design Lead

“ As a first-time Co-Lead of the S-L OHT representing the Patient Family voice, this year has been both eye-opening and rewarding. Gaining a deeper understanding of the work and responsibilities of the S-L OHT has given me valuable insight into the healthcare system. I’ve appreciated the chance to bring the PFAC perspective to the table and to help shape meaningful conversations around patient and family needs. ”

Greg Robbins Patient Family Care Partner
Co-Design Lead



PATIENT, FAMILY, CARE PARTNER (PFCP) ENGAGEMENT

INSIGHT TO ACTION: LIVED EXPERIENCE TO CO-DESIGNED ACCOMPLISHMENTS

- ✓ Secured PFCP representation on Sarnia-Lambton OHT Councils aligned with lived experience.
- ✓ Appointed and integrated Co-Design Leads into the Sarnia-Lambton OHT Leadership Team.
- ✓ Contributed to the Sarnia-Lambton OHT Annual Operating Plan and reporting.
- ✓ Embedded PFCP input into the Sarnia-Lambton OHT decision-making framework.
- ✓ Co-designed Palliative Care Toolkits to support understanding of diagnosis, future planning, and collaborative care.
- ✓ Helped distribute over 5,000 Connect My Health postcards and participated in outreach events.
- ✓ Designed a new Experience Survey to gather feedback on navigation, coordination, inclusivity, and person-centred care.

CREATING ENGAGEMENT & PARTNERSHIPS

LEARNING AND DEVELOPMENT

Lead and Co-lead completed McMaster's Engagement and Partnering for People-centred Care Course. Members also trained in trauma-informed care.



PFCP SUPPORTING PARTNERS

Established a process for council to support partners in all PFCP work.



STORYTELLING JOURNAL

Created and held workshop for members to learn, write, and complete art to represent experiences.



CREATING ENGAGEMENT CAPABLE ENVIRONMENTS SELF ASSESSMENT

Confirmed Level 2, and began planning for Level 3 with Advisory Council input.



EQUITY, INCLUSION, DIVERSITY, & ANTI-RACISM (EIDAR)



FRENCH LANGUAGE SERVICES

Bâtissons ensemble un meilleur accès aux services en français.

November
2024

- The City of Sarnia is designated under the French Language Services Act

SARNIA-LAMBTON IS HOME TO

5,400

FRANCOPHONES

December-
January
2025

- FLS Committee led French language service mapping, gap analysis, and improvement efforts.

**RECEIVED GRANT TO
ENHANCE CROSS-SECTOR
FRENCH LANGUAGE SERVICE
ALLIANCE FOR SARNIA-
LAMBTON**

**COMMUNITY
ORGANIZATION
CONSULTATIONS**

33

**SERVICES
AVAILABLE
IN FRENCH**

29+

February

- Developed French language resources to support service mapping, community engagement, and improved access across Sarnia-Lambton.

**NEW
RESOURCES**

2

- S-LOHT Organizational Assessment Tool
- Répertoire des services en français

**FLS RESOURCES ON
AGE-FRIENDLY COMMUNITY OF
PRACTICE**

50

March

- Launched the Franco Access Sante Hub on March 20, with Sarnia-Lambton OHT contributing as a Steering Committee member.
- Installed the Connection Cube at the Francophone Community Centre.
- Appointed the Engagement and Partnerships Lead as Co-Chair of the French Language Services Committee.

EQUITY, DIVERSITY & INCLUSION COLLABORATION



In March, 29 organizations were invited and came together to participate in a facilitator-led session to co-create a roadmap for EDI work in Sarnia-Lambton.

Co-designing a community-wide initiative that progresses equity, diversity, and inclusion, creating a Sarnia-Lambton EDI collaborative built on unity.

Next steps include developing a governance structure, building an action plan, and bringing partners together around a Unity Table.

MENTAL HEALTH & ADDICTION SERVICES



TRAUMA INFORMED CARE TRAINING

6 SESSIONS HELD

260 INDIVIDUALS TRAINED



Ian Robertson
Therapy Group



COMMUNITY HEALTH INTEGRATED CARE TEAM

Launched in June 2024, the Community Health Integrated Care (CHIC) Team supports individuals facing homelessness, mental health, and substance use challenges. Partnering with MobileCare and local services, they provide essential care, with wound care being the most common. The collaborative program was highlighted at the February 2025 Community Paramedicine Expo.



JUNE 1, 2024 - MARCH 31, 2025

2151 TOTAL ENCOUNTERS

MOBILECARE



1384 INDIVIDUALS SERVED IN SARNIA

MobileCare
Community Health Outreach

APRIL 1, 2024 - MARCH 31, 2025

MobileCare connected:

- 451 clients without a primary care provider
- 257 individuals with mental health needs
- 225 people facing addiction challenges

YOUTH MENTAL HEALTH FUND PROPOSAL

Sarnia-Lambton OHT partners support youth (12-25) with integrated mental health and addiction services. A collaborative proposal to the Youth Mental Health Fund, led by St. Clair Child and Youth, would aim to expand access for rural and urban Indigenous youth. The application is under review.

HOMELESS, ADDICTIONS, RECOVERY AND TREATMENT (HART) HUBS

In January, Sarnia-Lambton OHT partners including CMHA Lambton Kent, the County of Lambton, Bluewater Health and the North Lambton Community Health Centre secured approval for the Lambton County Homelessness and Addiction Recovery Treatment (HART) Hub. This new \$6.3M of annual funding will support comprehensive treatment and preventative services for people with complex needs.

YOUTH WELLNESS HUB



1580

TOTAL VISITS

APRIL 1, 2024 - MARCH 31, 2025

BEST PRACTICE SPOTLIGHT ORGANIZATION STEERING COMMITTEE (BPSO)

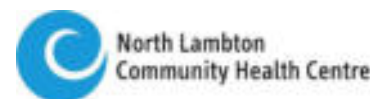


The Sarnia Lambton Ontario Health Team is proud to be part of the Registered Nurses' Association of Ontario's (RNAO) Best Practice Spotlight Organization (BPSO) OHT initiative. A BPSO OHT is an OHT that partners directly with RNAO to implement best practice guidelines (BPG) in order to better respond to health system transformation in Ontario. As part of a four-year partnership, the Sarnia-Lambton OHT is implementing four RNAO Best Practice Guidelines (BPGs) to enhance patient outcomes and foster a culture of continuous improvement across sectors and across the care continuum.



GUIDING IMPLEMENTATION

The Sarnia-Lambton BPSO Steering Committee has led the selection and implementation of four BPGs that align with local health priorities. To support this work, the committee developed a self-paced learning module for each guideline, ensuring consistent education and application across partner organizations. The committee also supports Champion training, encourages collaboration, and monitors progress through regular check-ins and feedback.



Advance Your Skills: Complete the BPSO OHT Modules and Make a Difference!



Created by the Sarnia-Lambton OHT BPSO Steering Committee, these modules are designed to educate and empower BPSO Champions. Modules are accessible on the Sarnia-Lambton OHT website, and feedback is collected to track engagement and impact.

There is a dedicated module for each of the four selected BPGs, making it easy for Champions to access relevant content and apply best practices across the system.



Scan here to
learn more !

INDIGENOUS COMMUNITIES ADVISORY COUNCIL

LOCALLY DRIVEN POPULATION HEALTH MODELS

The S-L OHT Indigenous Communities Advisory Council is actively implementing initiatives to support the Locally Driven Population Health Model (LDPHM), focusing on community-driven health improvements.

- Two new Indigenous Navigators have been hired to provide support in the Emergency Department at Bluewater Health, with extended services into evenings and weekends.
- The CMHA MobileCare Bus visited Walpole Island weekly, offering navigation services, mental health support, and primary care access directly within the community.
- The Twin Bridges Nurse Practitioner Led Clinic is providing preventive care, fostering attachment to primary care, and improving healthcare access for First Nations and urban Indigenous community members.

RECLAIMING HEALTH, HONORING TRADITIONS SYMPOSIUM

At the two-day symposium, the Sarnia-Lambton OHT announced \$850,000 in provincial funding from the Ministry of Health to improve healthcare access and equity for Indigenous communities. This funding will support expanded primary care access, improved mental health care, and enhanced cancer and chronic disease screening. It is part of the Locally Driven Population Health Models initiative, aimed at creating culturally responsive and equitable care for Aamjiwnaang, Kettle & Stony Point, Walpole Island First Nations, and urban Indigenous populations.

174

ATTENDEES AT THE
SYMPOSIUM



84

ATTENDEES
FOR THE DINNER



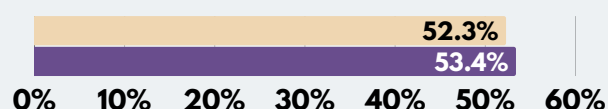
COLLABORATIVE QUALITY IMPROVEMENT PLAN (CQIP)

PROGRESS TOWARD BETTER HEALTH FOR ALL

The Collaborative Quality Improvement Plan (cQIP) is a Ministry-supported framework that helps Ontario Health Teams align and measure primary care improvement efforts. It promotes collaboration, data-driven planning, and accountability using shared indicators focused on prevention, chronic disease, and patient experience.

CERVICAL CANCER SCREENING RATES

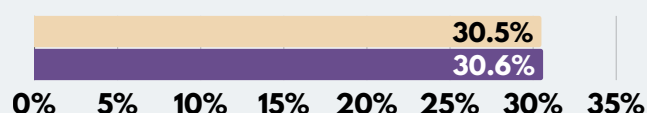
2023-24 2024-25



Slight increase with progress supported by pop-up clinics and social media outreach.

EMERGENCY DEPT USE FOR MENTAL HEALTH & ADDICTIONS

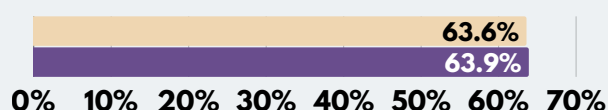
2023-24 2024-25



Slight increase reflects growing challenges like economic stress and housing instability.

COLORECTAL CANCER SCREENING RATES

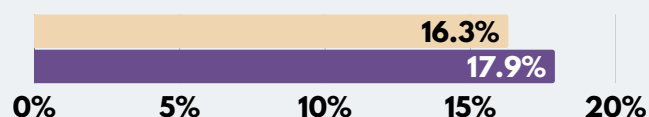
2023-24 2024-25



Slight increase with screening efforts held steady despite external disruptions.

CHRONIC HEART FAILURE READMISSION RATE

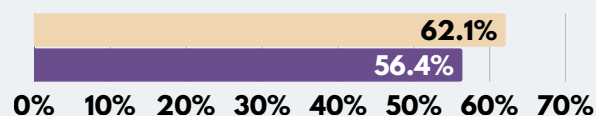
2023-24 2024-25



Despite the rise, 217 patients engaged in new self-management and medication optimization efforts.

MAMMOGRAM CANCER SCREENING RATES

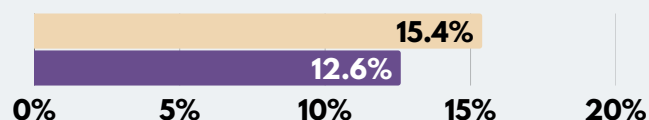
2023-24 2024-25



Slight decline due to broader eligibility (ages 40-49) and service delays from the Bluewater Health cyberattack.

ALTERNATE LEVEL OF CARE DAYS

2023-24 2024-25



Improvement achieved through 10 transitional care beds and the Red Cross-led Homeward Bound program which served over 1,000 clients & delivered 2,700+ meals and 1,500+ homemaking visits.

COLLABORATIVE GOVERNANCE

GOVERNANCE REVIEW



The Sarnia-Lambton OHT is embarking on a Governance Review in partnership with StrategyCorp, a project that will span across both the 24/25 and 25/26 fiscal years. The initiative will bring together S-L OHT partner representatives together to review the current structures, and review best practices across other OHTs and sectors to determine the best governance structure that aligns with the continued growth and maturation of the S-L OHT in years to come.



AFFILIATE AND SIGNATORY S-L OHT MEMBERSHIP PROCESS

The Sarnia-Lambton OHT is ready to bring on new partner organizations. After extensive research and collaboration with other OHTs, applications are live for both affiliate and signatory members on the S-L OHT website.

S-L OHT
MEMBERSHIP
INCREASED BY

23%



S-L OHT QUARTERLY BOARD REPORT

Through continued conversations at the S-L OHT Committee of the Boards, the S-L OHT team developed a quarterly board report, aimed to provide detailed updates on the S-L OHT activities and achievements, to share at the partner Board level. This report is in addition to regular Collaboration Council highlights which are shared monthly.

5

ENGAGEMENTS
TO PARTNER
BOARDS
AND/OR
LEADERSHIP
TEAMS

